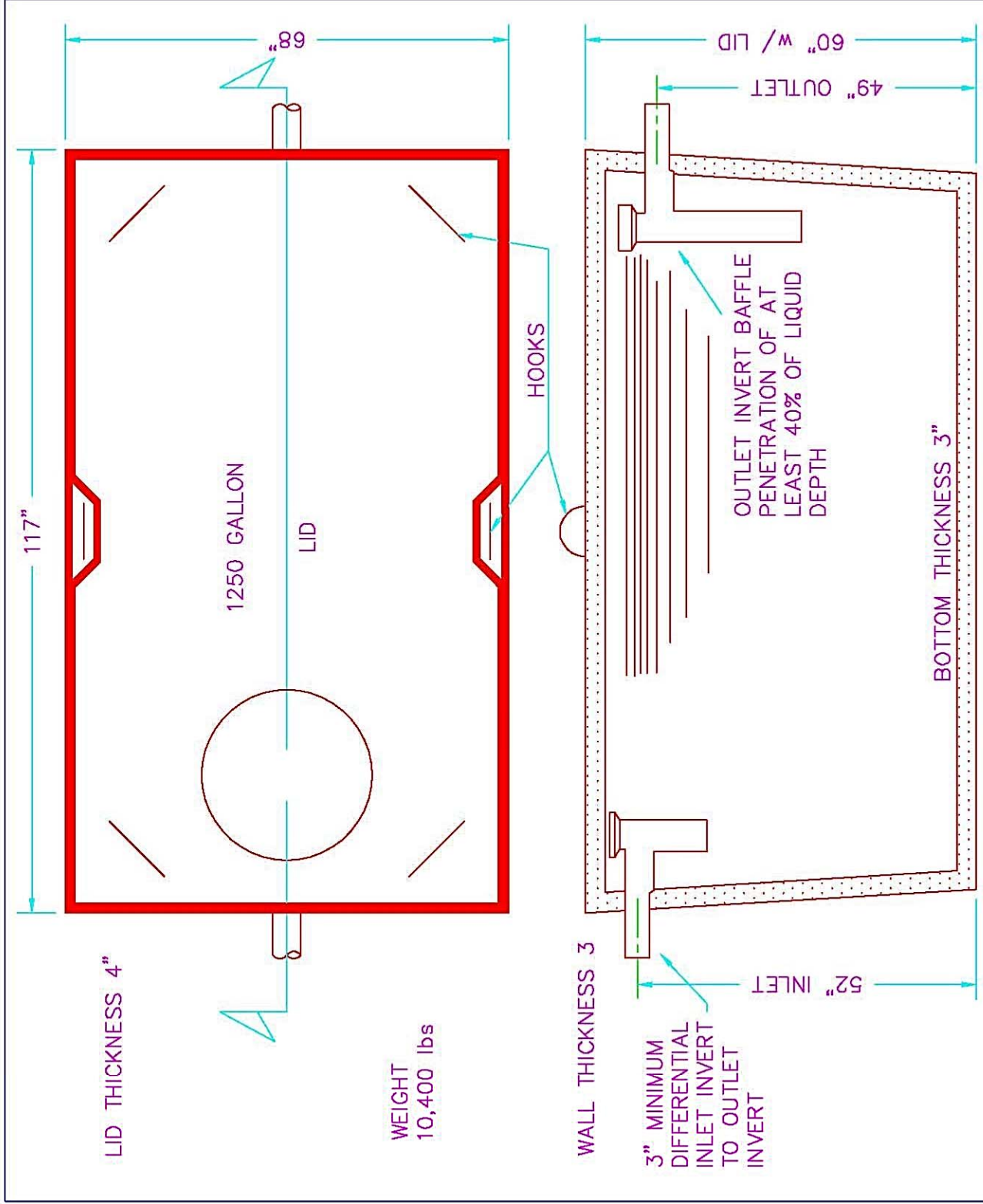


PRE-CAST CONCRETE  
WATER, STORM WATER,  
WASTE WATER, AND  
SEPTIC PRODUCTS AND  
ACCESSORIES

CAMDEN SUPPLY COMPANY  
2059 HENDERSON AVENUE  
WASHINGTON, PA 15301  
(724) 229-8441  
www.CamdenSupply.com



\*62 1/2" HIGH WITH TRAFFIC RATED LID  
 BAFFLES: CONTRACTOR TO INSTALL VENTED TEES FOR BAFFLES AT JOB SITE AS PER "TECHNICAL MANUAL FOR SEWAGE ENFORCEMENT OFFICERS VIII-11".

EXCAVATION SIZE:  
8'x12' MIN

ONE PIECE CONCRETE TANK  
1250 GALLON CAPACITY

DRAWN: WRR	DWG NO.:
DATE:	
SCALE: 1/2" = 1'-0"	8.A